

Fig. S1. GC-MS chromatograms of essential oil from *Solidago canadensis*: a) flowers and b) leaves

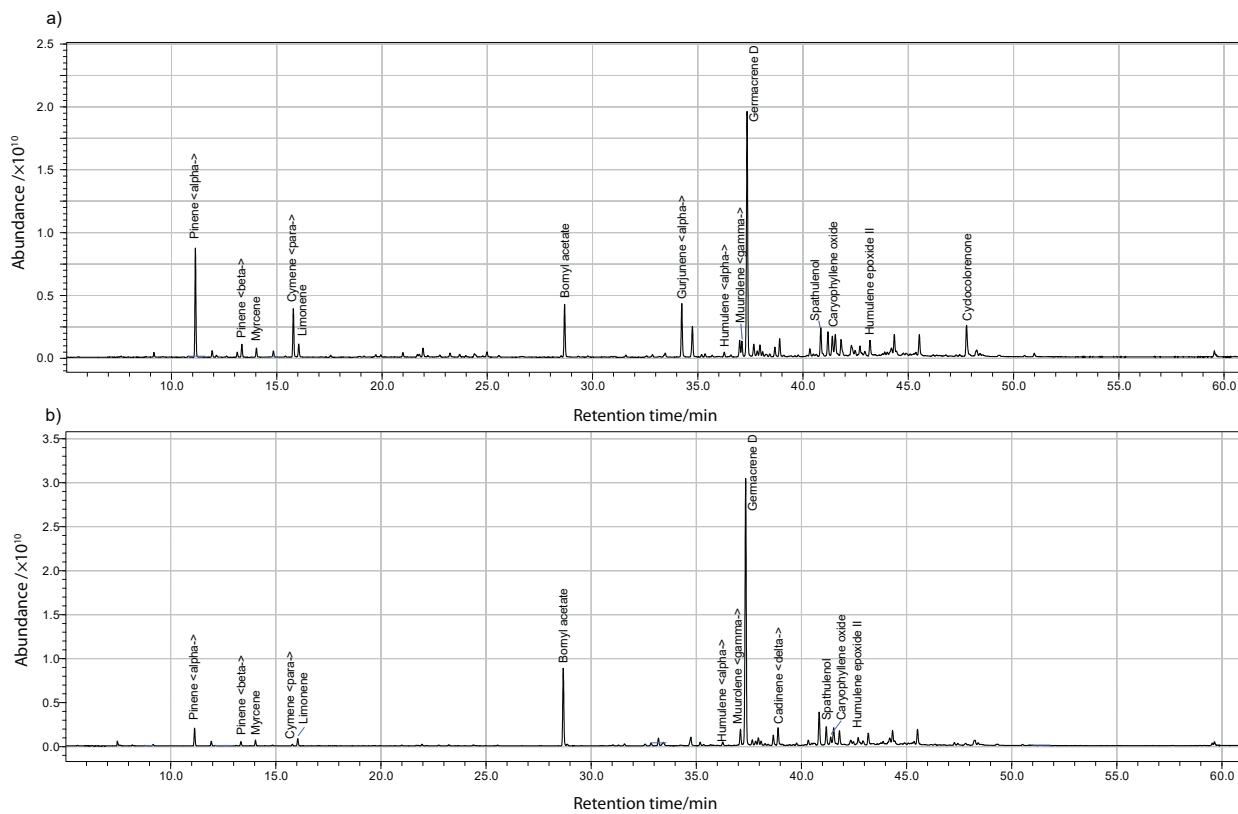


Fig. S2. GC-MS chromatograms of essential oil from *Solidago gigantea*: a) flowers and b) leaves

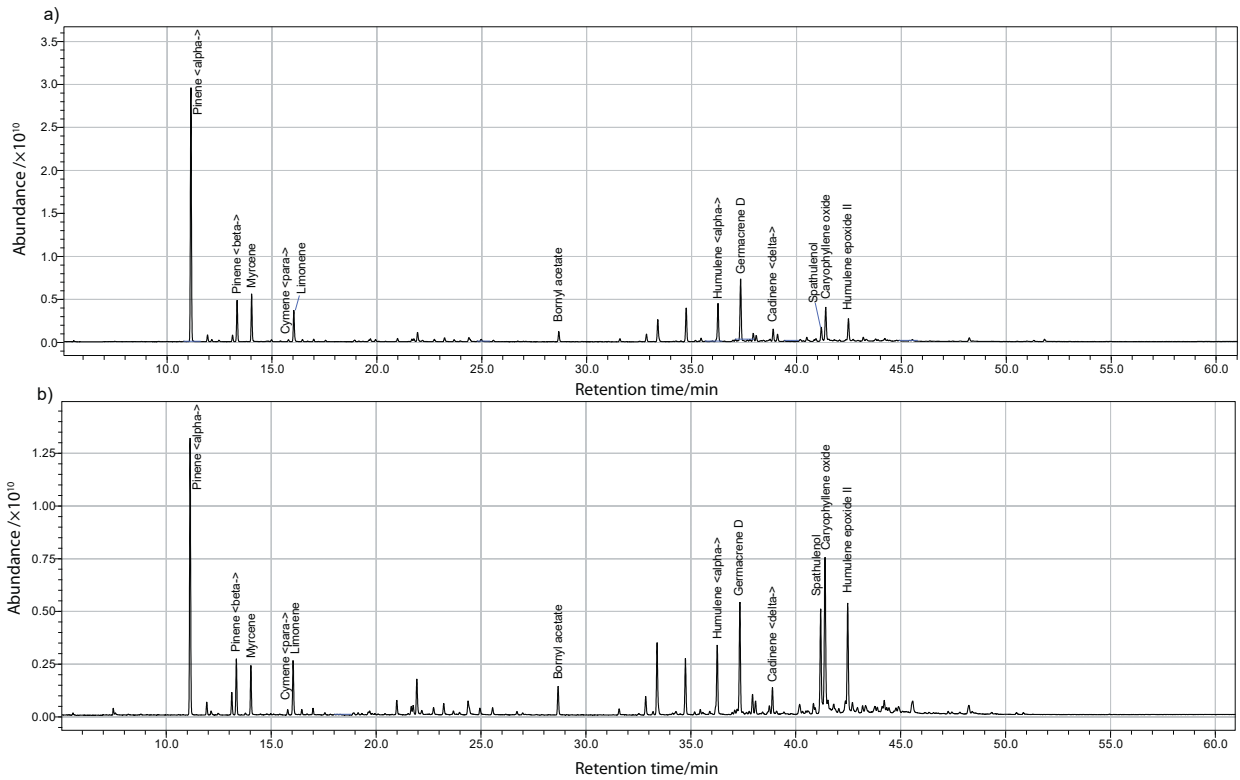


Fig. S3. GC-MS chromatograms of essential oil from *Solidago virgaurea*: a) flowers and b) leaves