

Back to article

Table S1. The list of antibiotics used in this study to validate the multidrug-resistant (MDR) profiles of *E. faecium*, *A. baumannii*, *S. aureus* and *K. pneumoniae* strains

Species	Class of antibiotics	Antibiotic	Abbreviation	Disc content	
<i>E. faecium</i>	Penicillins	Penicillin	P10	10 U	
				m/μg	
			Ampicillin	AM10	10
	Glycopeptides	Vancomycin	VA30	30	
		Lipoglycopeptides	Teicoplanin	TEC30	30
	Macrolides	Erythromycin	E15	15	
	Tetracyclines	Tetracycline	TE30	30	
	Fluoroquinolones	Ciprofloxacin	CIP5	5	
	Nitrofurantoin	Nitrofurantoin	FM300	300	
	Phenicols	Chloramphenicol	C30	30	
	Oxazolidinones	Linezolid	LZD30	30	
	<i>A. baumannii</i>	Penicillins+β-lactamase inhibitors	Ampicillin+sulbactam	SAM20	10+10
			Piperacillin+tazobactam	TZP110	100+10
		Cephems	Ceftazidime	CAZ30	30
			Cefepime	FEP30	30
Cefotaxime			CTX30	30	
Ceftriaxone			CRO30	30	
Carbapenem			Doripenem	DOR10	10
		Imipenem	IPM10	10	
		Meropenem	MEM10	10	
Aminoglycosides		Gentamicin	GM10	10	
		Tobramycin	NN10	10	
		Amikacin	AN30	30	
Tetracyclines		Doxycycline	D30	30	
		Minocycline	MI30	30	
		Tetracycline	TE30	30	
Fluoroquinolones	Ciprofloxacin	CIP5	5		
	Levofloxacin	LVX5	5		
Folate pathway antagonists	Trimethoprim+sulfomethoxazole	SXT	1.25+23.75		
<i>S. aureus</i>	Penicillins	Penicillin	P10	10 U	
				m/μg	
			Oxacillin	OX1	1
	Cephems	Cefoxitin	FOX30	30	
		Macrolides	Azithromycin	AZM15	15
	Clarithromycin		CLR15	15	
	Erythromycin		E15	15	
	Tetracyclines	Tetracycline	TE30	30	
		Doxycycline	D30	30	
		Minocycline	MI30	30	
	Lincosamides	Clindamycin	CC2	2	
	Folate pathway antagonists	Trimethoprim+sulfomethoxazole	SXT	1.25+23.75	
	Ansamycins	Rifampin	RA5	5	
	Oxazolidinones	Linezolid	LZD30	30	
	<i>K. pneumoniae</i>	Penicillins	Amoxicillin	AML25	25
Penicillins+β-lactamase inhibitors			Amoxicillin+clavulanic acid	AMC30	20+10
		Cephems	Cefepime	FEP30	30
Ceftazidime			CAZ10	10	
Cefuroxime			CXM30	30	
Cephalexin			CL30	30	
Carbapenem			Ertapenem	ETP10	10
		Imipenem	IPM10	10	
		Meropenem	MEM10	10	
Aminoglycosides		Gentamicin	GM10	10	
Fluoroquinolones		Ciprofloxacin	CIP5	5	
Folate pathway antagonists		Trimethoprim+sulfamethoxazole	SXT	1.25+23.75	
				γ/(mg/L)	
Polymyxins		Colistin	COL	2	

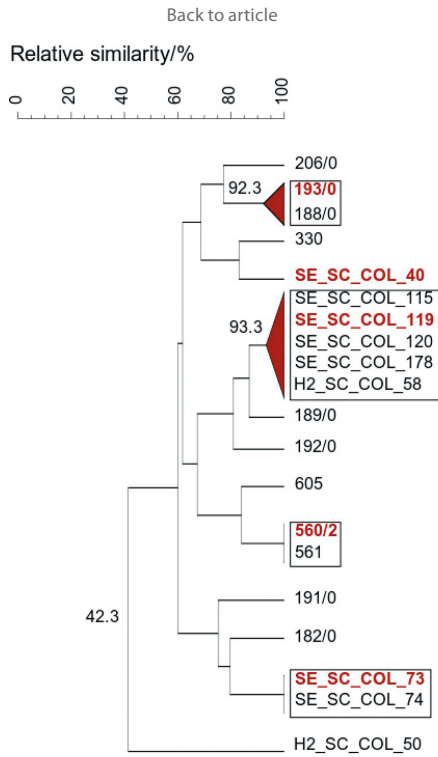


Fig. S1. Intraspecies variability of vancomycin-resistant *Enterococcus faecium* (VRE)

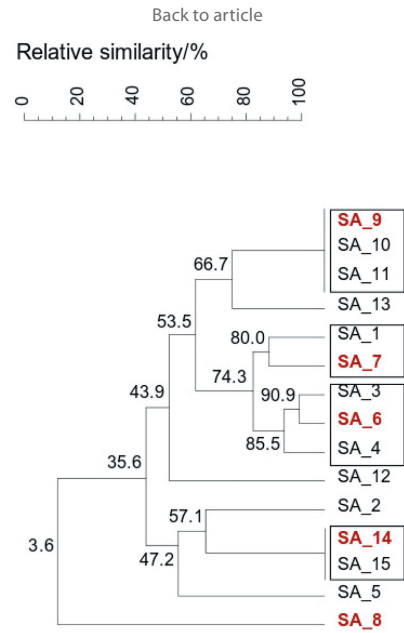


Fig. S2. Intraspecies variability of methicillin-resistant *Staphylococcus aureus* (MRSA)

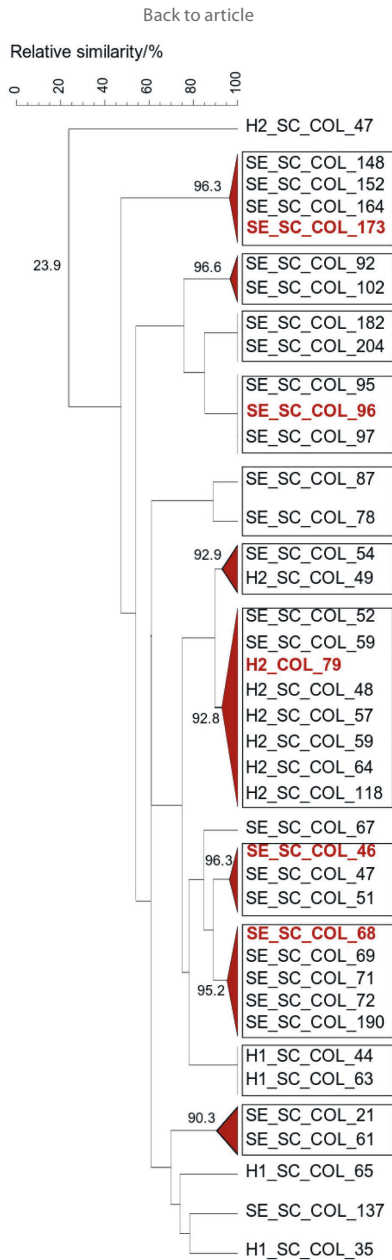


Fig. S3. Intraspecies variability of carbapenem-resistant *Klebsiella pneumoniae* (CRKP)

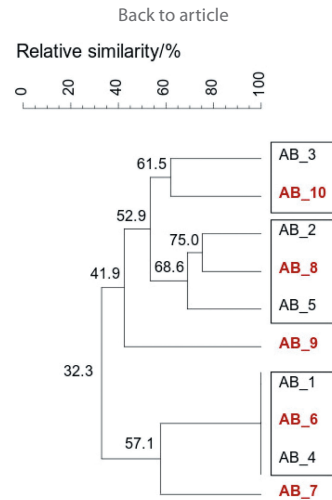


Fig. S4. Intraspecies variability of carbapenem-resistant *Acinetobacter baumannii* (CRAB)